



## Light Microscopic Observations on Proventriculus of Crossbred of Gramapriya Chicken

**Nirbhay Kumar Singh**

*Department of Veterinary Anatomy, Bihar Veterinary College, Patna-800014*

### Abstract

The present study was conducted on twelve adult Gramapriya birds of either sex whose weight varied from 1.5 – 2 Kg. All the birds were purchased from Central poultry farm Bihar Animal Sciences University, Patna. Before culling the birds were anaesthetised by giving inhalant anaesthesia and the organs were collected and preserved in 10% neutral buffered formalin for histological and histochemical studies. The wall of proventriculus of crossbred of Gramapriya consisted of four tunics which consisted of tunica mucosa, tunica submucosa, tunica muscular and tunica serosa. The tunica mucosa was thrown into extensively folded structures similar to papillae which consist of the opening of the excretory ducts of the glands of glandular stomach. The tunica mucosa consisted of lamina epithelialis, lamina propria and lamina muscularis mucosae. The lamina epithelialis was made up of mucus secreting cells which were lined with simple columnar epithelium. The lamina propria was made up of connective tissue containing collagen fibers, lymphoid tissues and blood capillaries. The lymphoid cells were present near the papillae of tunica mucosa. The tunica submucosa was present below the laminae muscularis mucosae and consisted of two types of proventricular glands, deep and superficial proventricular glands. The superficial glands were located near the mucosal folds. These proventricular glands were having the structure of a compound tubular gland. The wall of the tubular adenomeres were lined with simple cuboidal epithelium and the adenomeres were arranged in a circular pattern around the central collecting sinus. The tunica muscularis composed of smooth muscle fibers which consisted of an inner thick circular layer and an outer thin longitudinal layer. Collagen, reticular and elastic fibers were also observed in between the longitudinal layer.

**Key words :** *Proventriculus, histology, gramapriya, chicken.*

### Introduction

A major contribution to India's economy is contributed by livestock and poultry sector (1). Out of total income earned by Agriculture sector 17% is contributed by the poultry sector. Poultry are mainly reared for their egg and meat which have high quality nutrients and micronutrients which are essential for a balanced diet. Gramapriya chicken breed is a dual purpose multicolored breed mainly reared for its egg and meat production. The male and female parent of Gramapriya is a strain cross evolved by breeding of genes (WHLXRIR) for free range farming (No. ICAR-KVK (TML)/ Folder- 4/2017-18). The breed was developed for its high juvenile body weight, better feed conversion ratio, better immunity and an ideal body weight of about 1.5-2 Kg at the time of sexual maturity. Backyard poultry farming of Gramapriya is gaining great economic importance in agribusiness. They can be reared in rural village conditions with minimum input and low cost of production than those produced under intensive rearing condition with high input cost. Proventriculus play a significant role as the performance of an animal or bird is dependent on their digestive system and the feed which subsequently affect the F.C.R which is required for growth, maintenance, and egg production. Although (2,3,4) studied certain histological and histochemical structures on proventriculus of Japanese Quail, Uttara

fowl and Moorhen respectively very few literature is available on the proventriculus of Gramapriya. Hence the present study was undertaken to reveal the microscopic structure of proventriculus of Gramapriya chicken.

### Materials and Methods

The present study was conducted on twelve adult crossbred Gramapriya birds of either sex whose weight varied from 1.5–2 Kg. All the birds were purchased from Central poultry farm Bihar Animal Sciences University, Patna. Before culling the birds were anaesthetised by giving inhalant anaesthesia and the organ was collected and preserved in 10% neutral buffered formalin for histological and histochemical studies. After fixation a tissue of 5 mm thickness was cut with the help of BP blade and processed for various histological and histochemical processes such as washing, dehydration, clearing, paraffin impregnation, embedding and sectioning. Paraffin sections were cut at 5-7micron thickness with the help of semiautomatic rotary microtome and sections were stained with different staining procedures for various microscopic observations as per (5).

### Results and Discussion

The wall of proventriculus of crossbred of Gramapriya consisted of four tunics, tunica mucosa, tunica submucosa, tunica muscular and tunica serosa (Fig.-1).

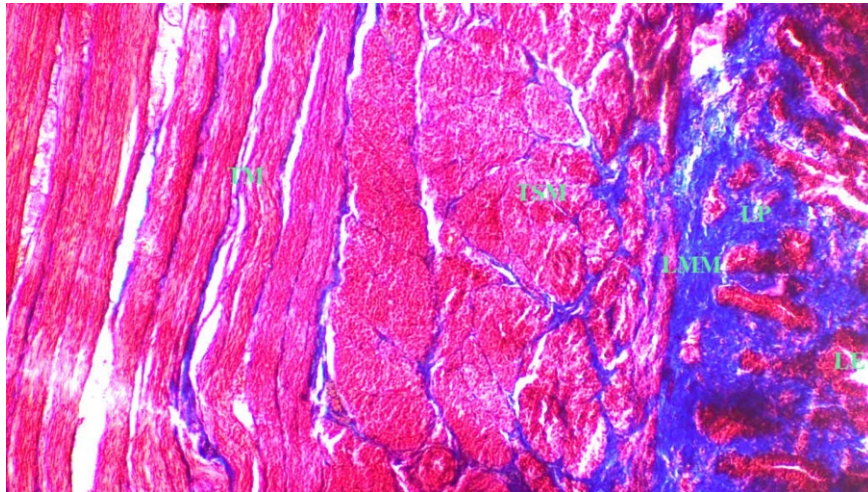


Fig.-1 : Photomicrograph of transverse section of proventriculus of crossbred of Gramapriya showing Laminae epithelialis (LE) Lamina propria (LP), Laminae muscularis mucosae (LMM), Tunica submucosae (TSM) and Tunica muscularis (TM). Mason Trichrome Stain, X100.

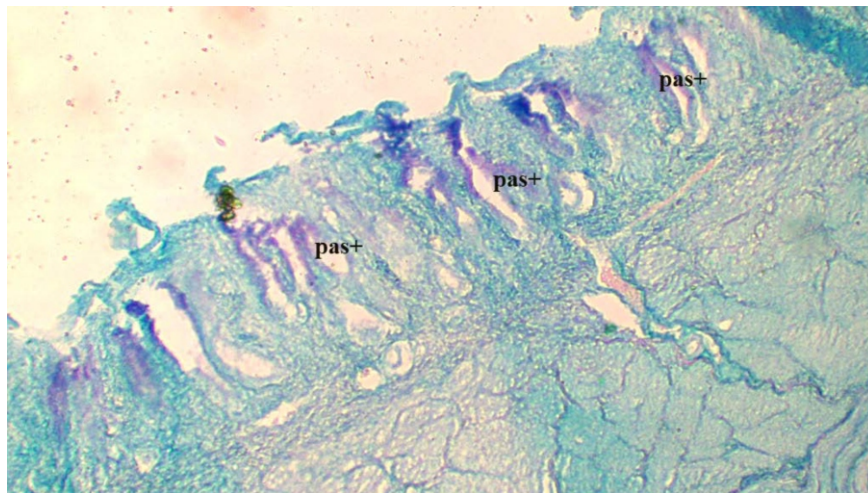


Fig.-2 : Photomicrograph of transverse section of proventriculus of crossbred of Gramapriya showing PAS positivity in mucous secreting cells of tunica mucosa. PASstain, X100.

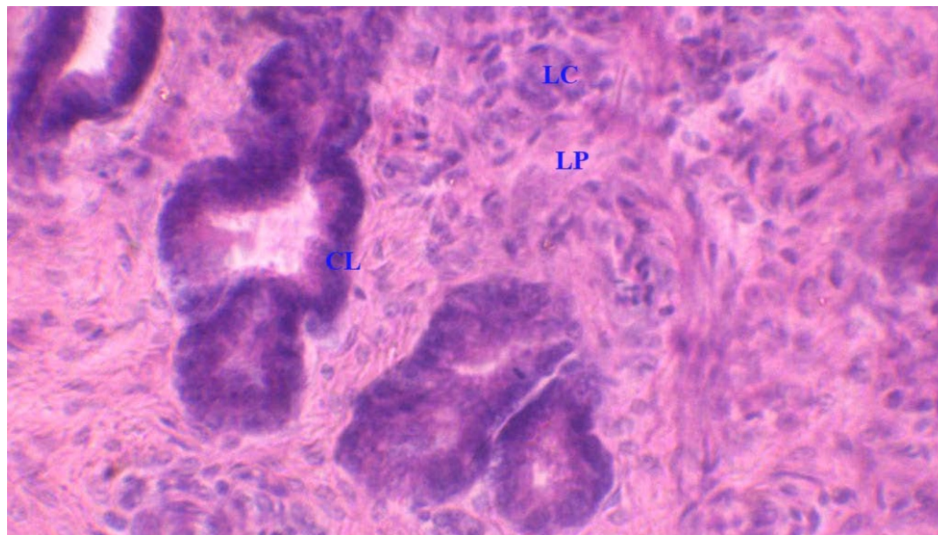


Fig.-3 : Photomicrograph of transverse section of proventriculus of crossbred of Gramapriya showing lymphoid cells (LC) in the region of laminae proprea (LP) and columnar lining (CL) of the mucous. Secreting cells of lamina mucosae H&E stain X400.



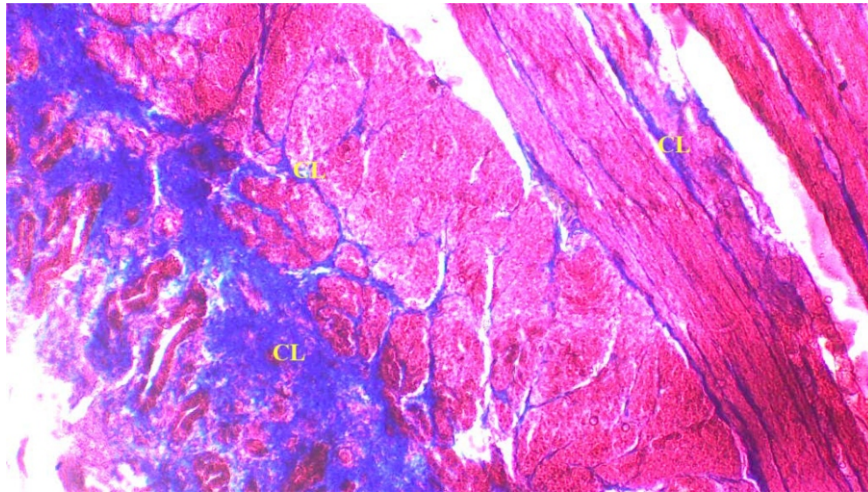


Fig.-4 : Photomicrograph of transverse section of proventriculus of crossbred of Gramapriya showing collagen fibers (CL) in the region of laminae propria, tunica muscularis and tunica serosa. MassonTrichomestain, X100.

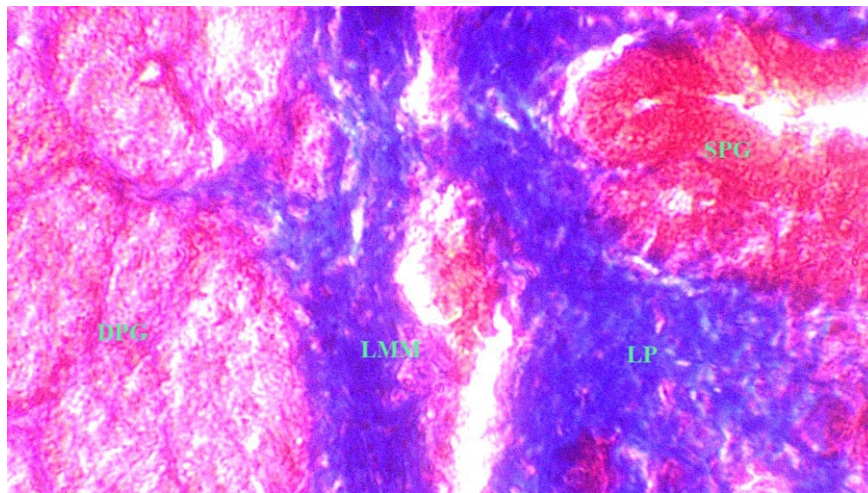


Fig.-5 : Photomicrograph of transverse section of proventriculus of crossbred of Gramapriya showing Superficial proventricular glands (SPG) in the region of Laminae propria and deep proventricular glands (DPG) in the region of Tunica submucosae. Mason trichrome Stain, X400.

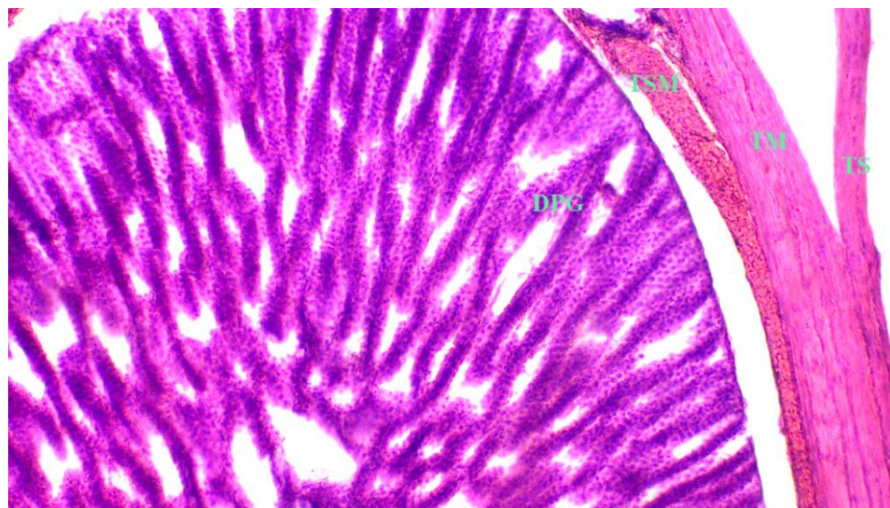
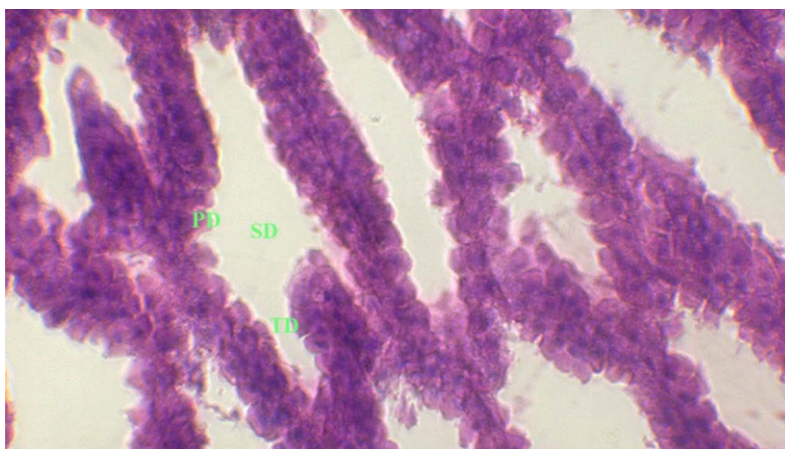
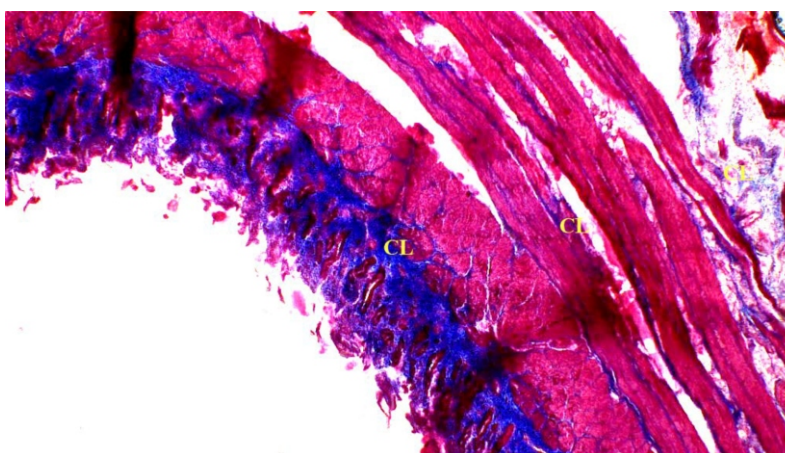


Fig.-6 : Photomicrograph of transverse section of proventriculus of crossbred of Gramapriya showing deep proventricular glands (DPG) in the region of Tunica submucosae and above Tunica muscularis (TM) and Tunica serosa (TS). H&E stain, X100.



**Fig.-7 :** Photomicrograph of transverse section of proventriculus of crossbred of Gramapriya showing compound tubular glands having primary duct (PD), secondary duct (SD) and tertiary duct (TD). H&E stain, X400.



**Fig.-8 :** Photomicrograph of transverse section of proventriculus of crossbred of Gramapriya showing collagen fibers in the region of laminae propria, tunica submucosae, tunica muscularis and tunica serosa. VanGeisonstain, X100.

The tunica mucosa was thrown into extensively folded structures similar to papillae which consist of the opening of the excretory ducts of the glands of glandular stomach. Similar observations were reported in Pigeon and Coot bird by (6 and 7) respectively. The tunica mucosa consisted of lamina epithelialis, lamina propria and lamina muscular mucosae. The lamina epithelialis was made up of mucus secreting cells which were lined with simple columnar epithelium (fig.-3).

Similar observations were reported in Japanese quail by (8) and in cattle egret fowl by (9). The lamina propria was made up of connective tissue containing collagen fibers, lymphoid tissues and blood capillaries. The lymphoid cells were present near the papillae of tunica mucosa, indicating the importance of proventriculus in enhancing the immune system where the food passes through the digestive tract (fig-3&4).

These findings were in accordance with the observations of (9) in Cattle egret, (10) in broilers, (11,12,13) in fowl. The lamina muscularis mucosae was

made up of smooth muscle fibers which were oriented longitudinally into two layers an internal and an external layer around the proventricular glands. Similar observations were recorded in Grey backed shrike by (14). The tunica submucosa was present below the laminae muscularis mucosae. It consisted of two types of proventricular glands, deep and superficial proventricular glands. The superficial glands were located near the mucosal folds (fig. 5 and 6).

These proventricular glands were having the structure of a compound tubular gland. The wall of the tubular adenomeres were lined with simple cuboidal epithelium and the adenomeres were arranged in a circular pattern around the central collecting sinus. The present finding was in accordance with the observation of (15) who reported that the wall of each lobule consisted of numerous straight alveoli radiating out from the central cavity. The duct system comprised of primary, secondary and tertiary duct which were lined with simple columnar epithelium (Fig.-7).

The location of proventricular glands is a



controversial matter between authors, some authors have reported that the proventricular glands were located in the lamina propria and lamina muscularis mucosa whereas according to some authors the proventricular glands are located in the tunica submucosa. The location of proventricular glands in parent stock of Gramapriya was in accordance with the observations of (16,17,18). They stated that these glands were submucosal in location arranged into round, oval topolygonal shaped lobules. The space between these lobules were filled with blood vessels, collagen fibers, reticular fibers and elastic fibers. However, the present location of proventricular gland in submucosal region was in contradictory to the findings of (19) who stated that these glands penetrated into the muscularis mucosae in fowl. It was also contradictory with the observations of (20) who stated that these glands were present in the lamina propria and (21) who could not identify the existence of submucous layer in proventriculus of yellow-billed grosbeaks. The tunica muscularis composed of smooth muscle fibers which consisted of an inner thick circular layer and an outer thin longitudinal layer. Collagen, reticular and elastic fibers were also observed in between the longitudinal layer which were similar to the observations recorded in (16). The tunica serosa was a thin layer of connective tissue. Presence of connective tissue fibers, collagen, reticular and few elastic fibers were observed in serosa (fig 8) and the findings were similar to the observations reported in Black tailed crane (14), in Coot bird by (7), in fowl by (12,13).

## References

- Nath B.G., Pathak P.K. and Mohanty A.K. (2012). Constraints Analysis of Poultry Production at Dzongu Area of North Sikkim in India. *Indian J. Appl. Sci.*, 2: 397-401.
- Das S., Dhote B.S., Singh G.K. and Pandey M. (2013). Gross, Morphological and Biometrical Studies on the Proventriculus of kadaknath. *Indian Journal of Veterinary Anatomy*, 25(2): 74-75.
- Rupam Sinha, Meena Mrigesh, Ishwar Singh, Balwinder Singh and Niddhi Arora (2018). Sequential histomorphological and micrometrical studies on proventriculus of post hatch Uttara fowl. *J. Exp. Zool. India* 21(1): 473-478.
- Ihab Abbas Taher, Ahmed Abbas Ali, Sawsan Gafoori Ahmed, Eyhab R. Al-Samawy and Fayak J. Al-Sa (2020). Histology and histochemical structure of the stomach (proventriculus and ventriculus) in Moorhen (*Gallinula chloropus*) in south Iraq. *Plant Archives*, 20 (Supplement 1): 189-194.
- Luna L.G. (1968). Manual of histologic staining methods of the armed forces institute of pathology. 3<sup>rd</sup> Edn. New York, McGraw-Hill.
- Al-Saffar, Eyhab R.M. and Al-Samawy (2018). Histomorphological and histochemical study of stomach of domestic pigeon (*Columba livia domestica*). *The Iraqi J. Vet. Med.*, 40: 89-96.
- Batah A.L., Selman H.A. and Saddam M. (2012). Histological study for stomach (proventriculus and gizzard) of Coot Bird (*Fulica atra*). *Diyala Agriculture Science Journal* 4(1): 9-16.
- Dahekar N.M., Mamde C.S., Masuood A.J. and Rohnkar R.U. (2014). Gross Anatomical and Histomorphological Studies on Proventriculus of Japanese Quail. *Indian Journal of Veterinary Anatomy*, 26(1): 62-63.
- Hussein S. and Rezk H. (2016). Macro and microscopic characteristics of the gastrointestinal tract of the cattle egret (*Bubulcus ibis*). *Int. J. Anat. Res.*, 4(2): 2162-74.
- Lambate S.B. and Mamde C.S. (2008). Histological studies of proventriculus and gizzard glands in broiler. *Royal Veterinary Journal of India*, 4(2): 9-12.
- Rocha D.O.S. and De Lima M.A.I. (1998). Histological aspects of the stomach of burrowing Owl (*Speotyto cunicularia*, MOLINA, 1782). *Rev. Chil. Anat.*, 16(2): 191-197.
- Banks W.J. (1993). *Applied veterinary histology*. 3rd edition, mosby year Book Co., U.S.A. pp. 356-360.
- Dellmann H.D. (1976). *Text book of Veterinary Histology*. 4th edn. Blackwell Publishing, Ames, Iowa, USA. pp. 192-193.
- Zhu L. (2015). Histological study of the oesophagus and stomach in grey-backed shrike. *Int. J. Morphol.* 33: 459-464.
- Aitken R.N.C. (1958). A histochemical study of the stomach and intestine of the chicken. *Journal of Anatomy*, 92: 453-466.
- Das S. (2010). Gross, histological, histochemical and ultrastructural studies on proventriculus and gizzard of Kadaknath Fowl. *Thesis, GBPUAT, Pantnagar* (Uttarakhand).
- Tonner P.G. (1963). Fine structure of active and resting cells in the submucosa of fowl proventriculus. *J. Anat.* 97: 575-583.
- Warner R.L.L., Mc Farland L. and Wilson W.O. (1967). Microanatomy of the upper digestive tract of the Japanese quail. *Am. J. Vet. Res.*, 28(126): 1537-48.
- Farner D.S. (1960). Digestion and digestive system. In: *Biological and comparative physiology of birds*. Eds. Marshall A.J. Academic press, New York.
- Das L.N. and Biswal G. (1967). Microscopic anatomy of oesophagus, proventriculus and gizzard of the domestic duck (*Anas boschas*). *Indian Vet. J.* 44(4): 284.
- Zhu L., Wang J.J., Shi X.D., Hu J. and Chen J.G. (2013). Histological observation of the Stomach of the Yellow-billed Grosbeak. *Int. J. Morphol.*, 31(2): 512-515.